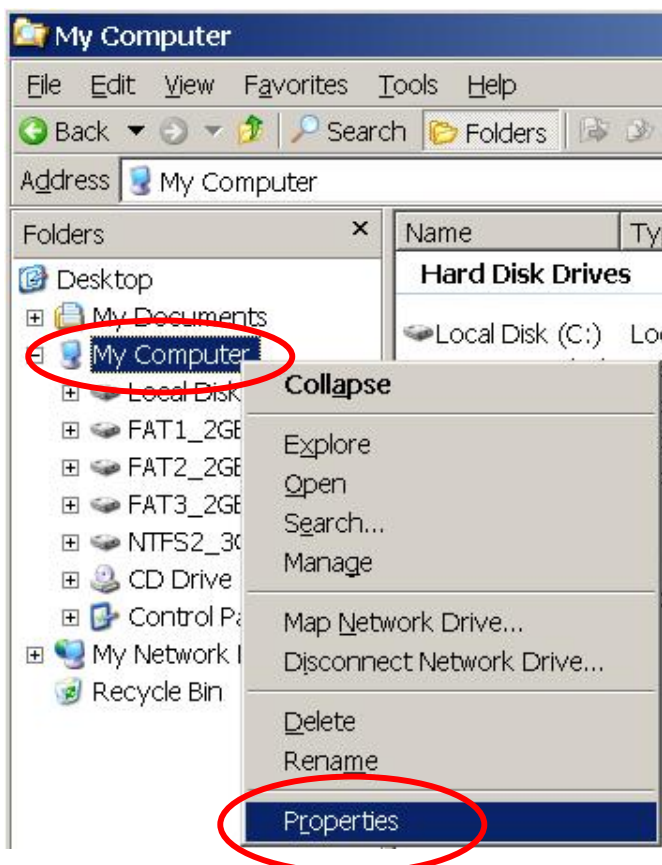


## *Enabling Memory Dump While System Crash (Windows Server 2003)*

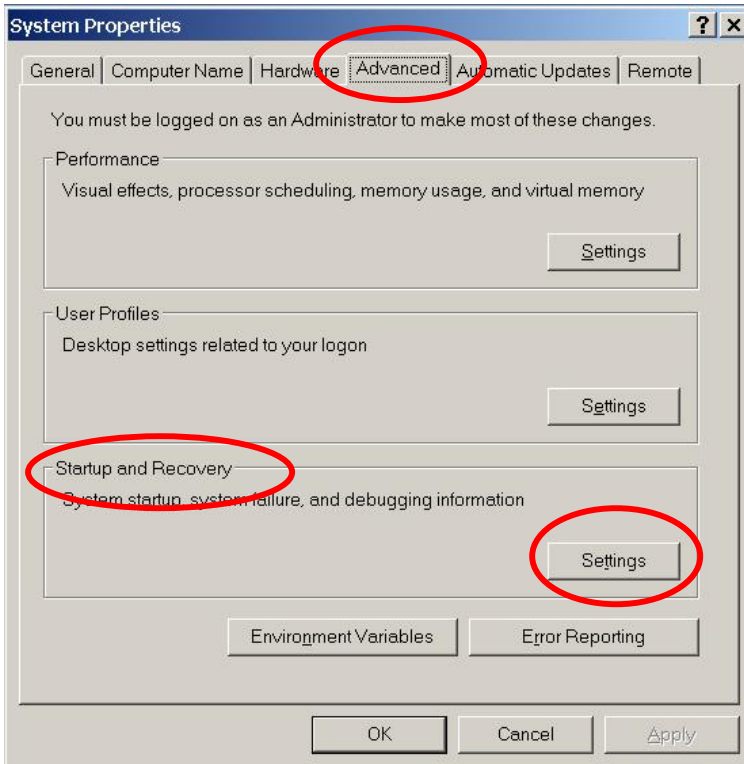
The following procedures show guide you to enable the Memory-Dump feature while system crash. You can then send the memory-dump file to us for reference.



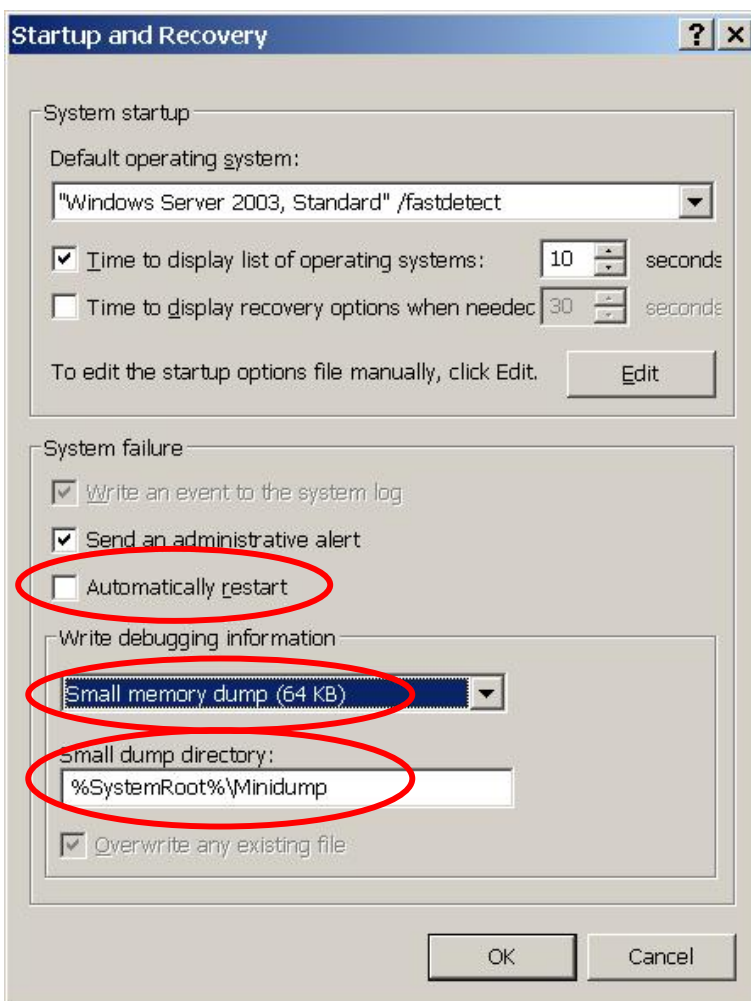
Step 1. Launch the “Windows Explorer” by click the “Start \ Windows Explorer” menu items.



Step 2. Right-click mouse button on “My Computer” and then select the “Properties” option.



Step 3. Select the “Advanced” page and click on the “Settings” button on the “Startup and Recovery” group.



Step 4. Uncheck the “Automatically restart” option.

Step 5. Select the “Small memory dump (64 KB)” option for the “write debugging information” item.

Step 6. Click the “OK” button to finish it.