

# 1

## Install the driver on Windows 7

Follow those steps:



1. Setup the Windows driver.(For example:PCI-1002)

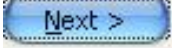


You can get the driver from:

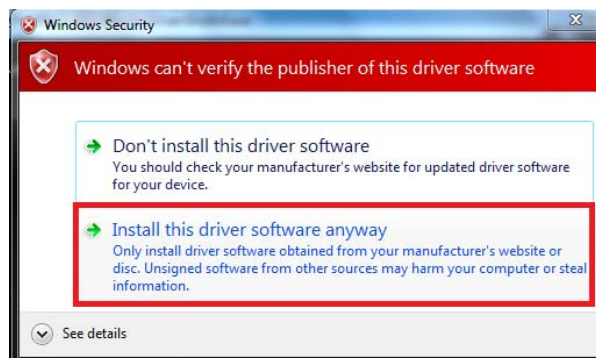
CD:\NAPDOS\PCI\PCI-1002\DLL\_OCX\

[http://ftp.icpdas.com/pub/cd/iocard/pci/napdos/pci/pci-1002/dll\\_ocx/](http://ftp.icpdas.com/pub/cd/iocard/pci/napdos/pci/pci-1002/dll_ocx/)



Windows 2000/XP driver of ICP DAS I/O Card also supports 32-bit Windows 7 versions.

2. Click  button to start installation.
3. Click  button to install driver into the default folder.
4. Click  button to continue installation.
5. Installation the following windows will appear, select the “Install this driver software anyway (I)” and continue it.



6. Click  button to reboot the PC.

# 2

## Support I/O Card List for Windows 7

PIO Series	PISO	PCI Series	PEX/FRB Series
PIO-D168, PIO-D144/D144U, PIO-D96/D96U, PIO-D64/D64U, PIO-D56/D56U, PIO-D48/D48U, PIO-D24/D24U	PISO-P64/C64/A64, PISO-730/730A PISO-P32C32/P32C32U, PISO-P32A32, PISO-P32S32WU PISO-P16R16U PISO-P8R8, PISO-P8SSR8AC, PISO-P8SSR8DC	PCI-1202L/H, PCI-1202LU/1202HU PCI-1602, PCI-1602F PCI-1602U, PCI-1602FU PCI-1800L/H, PCI-1802L/H	PEX-P16R16i
PIO-DA16/DA8/DA4 PIO-DA16U/DA8U/DA4U PISO-DA16U/DA8U/DA4U	PISO-725	PCI-P16R16, PCI-P8R8 PCI-P16C16, PCI-P16POR16	FRB-100/100U, FRB-200/200U
PIO-821	PISO-DA2/DA2U	PCI-822LU, PCI-826LU	PEX-D48
		PCI-1002L/H PCI-1002LU/1002HU	
		PCI-M512/M512U	
		PCI-TMC12A	

### The ICP DAS Web Site

<http://www.icpdas.com>



### Contact Us

[Service@icpdas.com](mailto:Service@icpdas.com)

- Technical support
- Supplies and ordering information
- Ways to enhance your device
- FAQ
- Application story

Copyright ©2009 by ICP DAS Co., Ltd. All right are reserved