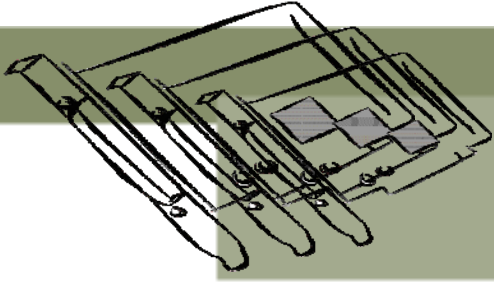


I/O CARD QUICK START GUIDE



for PCI-P8POR8/P16POR16

English/ Aug. 2011/ Version 1.2

1

What's in your package?

- One PCI-P8POR8/P16POR16 series card
- One companion PCI CD (V5.1 or later)
- One Quick Start Guide (This document)
- One CA-4002 D-Sub connector for PCI-P8POR8
- One CA-4037W cable and two CA-4002 D-Sub connector for PCI-P16POR16



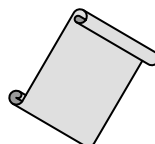
PCI-P8POR8/
PCI-P16POR16 Card



Software Utility CD



CA-4002 D-Sub Connector



Quick Start Guide



CA-4037W Cable

2

Installing Windows Driver

Follow these steps:

1. Setup the Windows driver. The driver is located at:

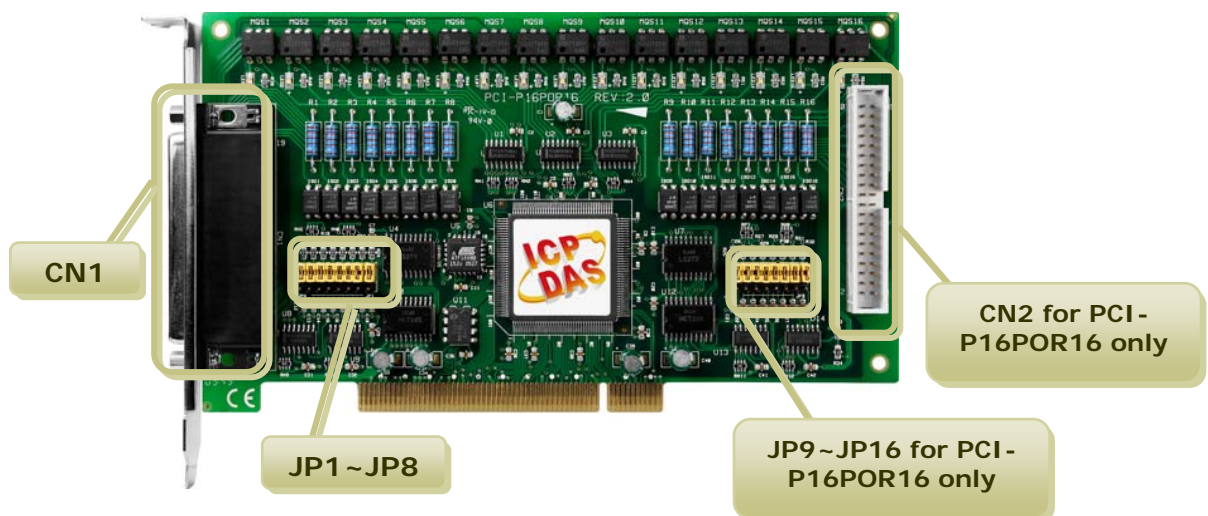
CD:\NAPDOS\PC\PCI-P16R16\DLL_OCX\

http://ftp.icpdas.com/pub/cd/iocard/pci/napdos/pci/pci-p16r16/dll_ocx/

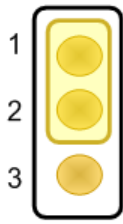
2. Click the “Next>” button to start the installation.
3. Click the “Next>” button to install the driver into the default folder.
4. Click the “Install” button to continue the installation.
5. Select “NO, I will restart my computer later” and then click the “Finish” button.

3

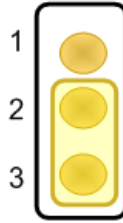
Jumper Setting



JP Jumper: Input Signal Type Jumper



Without Filter
For DC Signal
(Default Setting)



Without AC Filter
For AC Signal



For more detailed jumper information, please refer to manual section 1.5.3 Jumper Settings.

CD:\NAPDOS\PCI\PCI-P16R16>manual\

Jumper	Channel	Jumper	Channel
JP1	DI0	JP9	DI8
JP2	DI1	JP10	DI9
JP3	DI2	JP11	DI10
JP4	DI3	JP12	DI11
JP5	DI4	JP13	DI12
JP6	DI5	JP14	DI13
JP7	DI6	JP15	DI14
JP8	DI7	JP16	DI15

4

Installing Hardware on PC

Follow these steps:

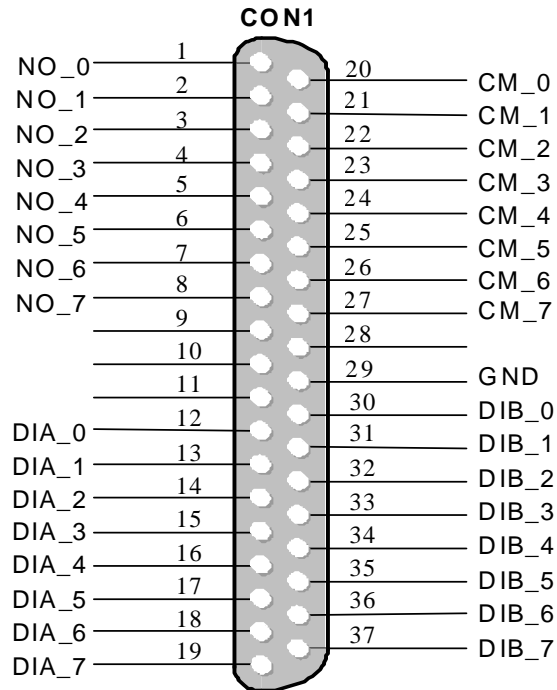
1. Shut down and power off your computer.
2. Remove the cover from the computer.
3. Select an unused PCI slot.
4. Carefully insert PCI-P8POR8/P16POR16 into the PCI slot.
5. Replace the PC cover.
6. Power on the computer.

After powering-on the computer, please finish the Plug&Play steps according to the prompt message.

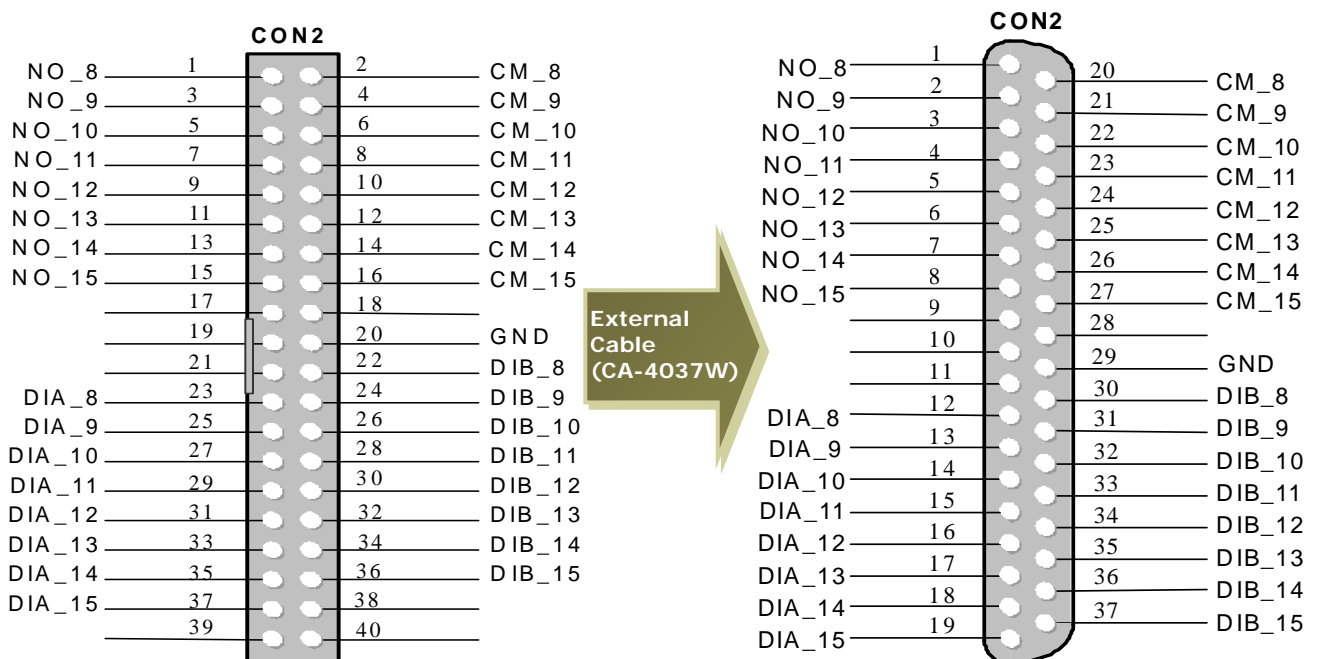
5

Pin Assignments

■ PCI-P8POR8/P16POR16 CON1 (Female DB37)



■ PCI-P16POR16 CON2 (40-pin box header)



40-Pin D-Sub Connector

37-Pin D-Sub Connector

6 Self Test

1. Prepare for device:

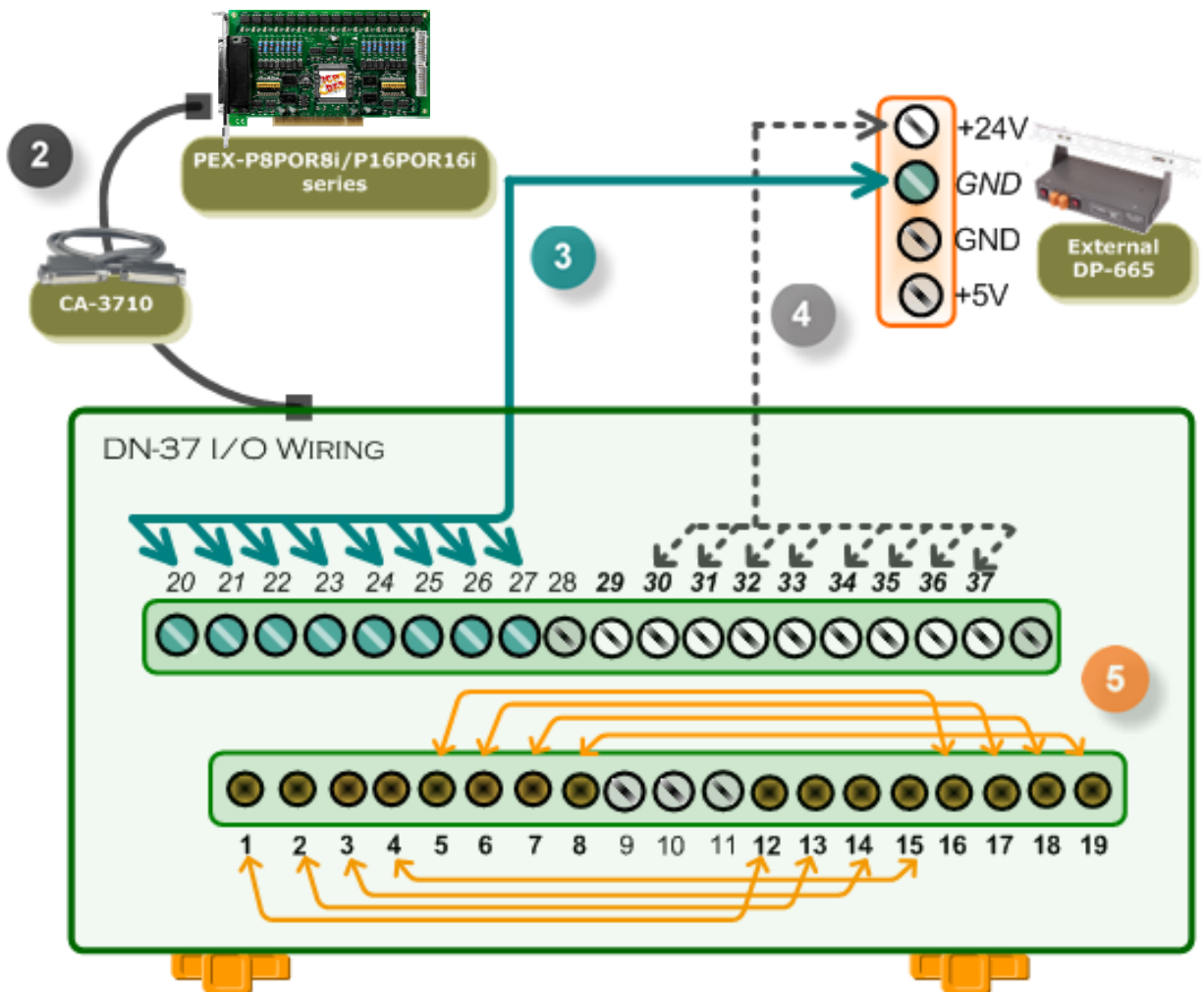
- DN-37 (Optional) wiring terminal board.
- External power supply device. For example: DP-665(Optional)

2. Use the DN-37 to connect the board CON1.

3. Connect the External Power GND to CON1.CM0 Connect the External Power GND to CON1.CM7.

4. Connect the External Power +24 V to CON1.DIB0..... CON1.DIB7.

5. Connect the CON1.NO0 with CON1.DIA0 Connect the CON1.NO7 with CON1.DIA7.



**6. Execute the Digital I/O sample program.
The sample program is contained in:**

CD:\NAPDOS\PCI\PCI-P16R16\dll_ocx\Demo
http://ftp.icpdas.com/pub/cd/iocard/pci/napdos/pci/pci-p16r16/dll_ocx/demo/

7. The following sample program is written in Delphi.

File: DLL_Delphix_XXXXXX.exe

Path:\DLL_Delphix\01\

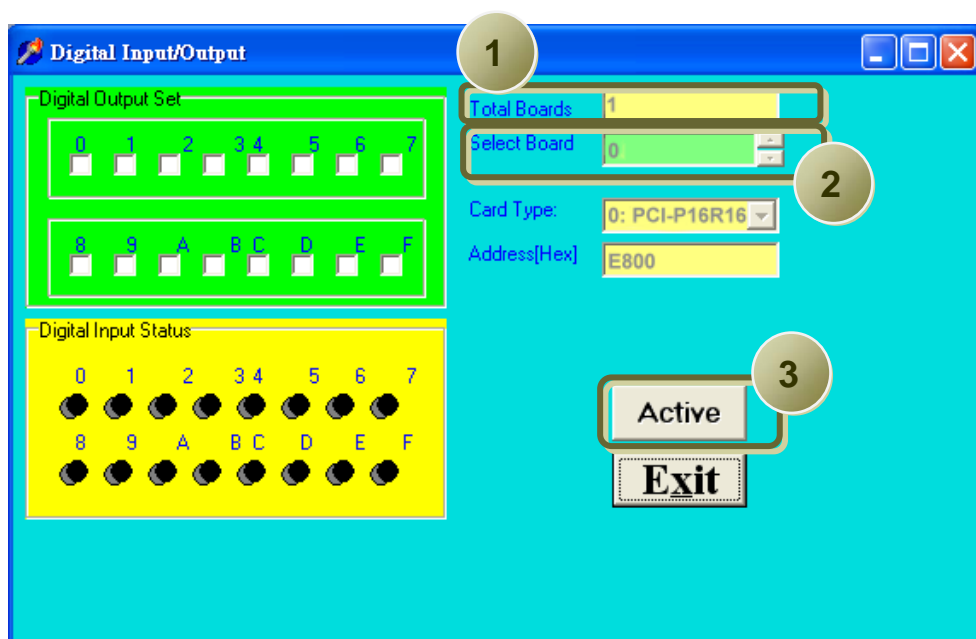
Double click the "Project1.exe"



Project1.exe

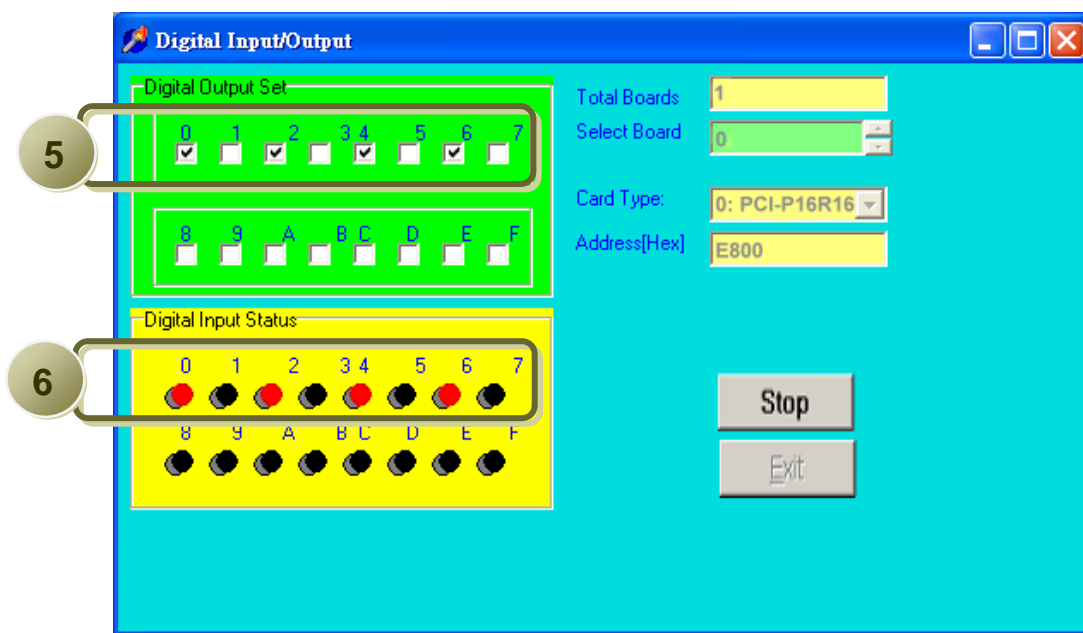
**8. Verify total numbers of the PCI-PxPORx card and
Perform DIO(0-7) functions test.**

- 1 The one PCI-PxPORx had successfully installed to PC.
- 2 Select the board number for the PCI-PxPORx. It starts from 0.
- 3 Click this button to start test.



9. Get DIO(0-7) function test result.

- 5 Click channel 0、2、4、6 in Digital Output field.
- 6 The Digital Input status should show current status-- channel 0、2、4、6 now in high state (Red light).



Additional Information

- **PCI-P8POR8/P16POR16 Series Card Product page:**
http://www.icpdas.com/products/DAQ/pc_based/pci_p16por16.htm
- **DP-665, CA-3710 and DN-37 page (Optional):**
http://www.icpdas.com/products/Accessories/power_supply/dp-665.htm
http://www.icpdas.com/products/Accessories/cable/cable_selection.htm
http://www.icpdas.com/products/DAQ/screw_terminal/dn_37.htm
- **Documentation:**
CD:\NAPDOS\PCI\PCI-P16R16\Manual
<http://ftp.icpdas.com/pub/cd/iocard/pci/napdos/pci/pci-p16r16/manual/>
- **Software:**
CD:\NAPDOS\PCI\PCI-P16R16\
<http://www.icpdas.com/download/pci/pci-p16r16.htm>

