

1

What's on your package?

- One PIO-821 series card
- One companion PCI CD V 3.6
- One Quick Start Guide(this document)

2

Installing Windows Driver

Follow those steps:

I. Setup the Windows driver.

You can get the driver from:

CD:\NAPDOS\PCI\PIO-821\DLL\

<http://ftp.icpdas.com/pub/cd/iocard/pci/napdos/pci/pio-821/dll/>



Windows driver only support windows 98/NT/2000/XP/2003

- II. Click button to start installation.
- III. Click button to install driver into the default folder.
- IV. Click button to continue installation.
- V. Click button to reboot the PC.

3

Installing Hardware on PC

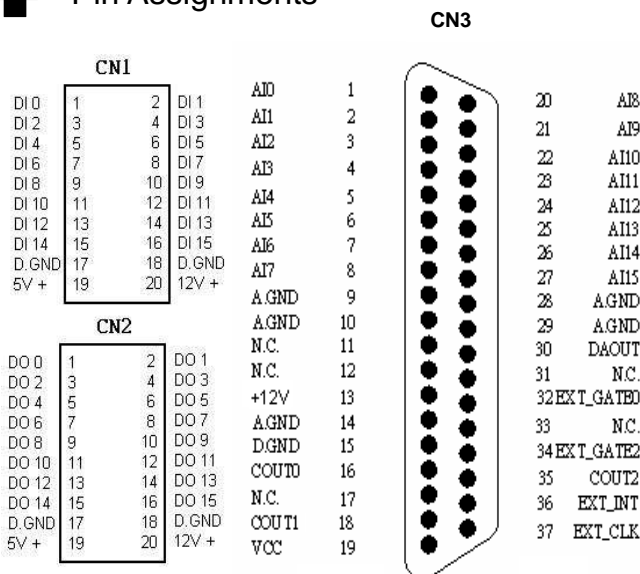
Follow those steps:

- I. Shut down your computer
- II. Remove all covers from the computer
- III. Select an unused PCI slot
- IV. Carefully insert your I/O card into the PCI slot
- V. Replace the PC covers
- VI. Power on the computer

After powering-on the computer, the Plug&Play card could work immediately.

4

Pin Assignments



CN1 & CN2 are TTL compatible.

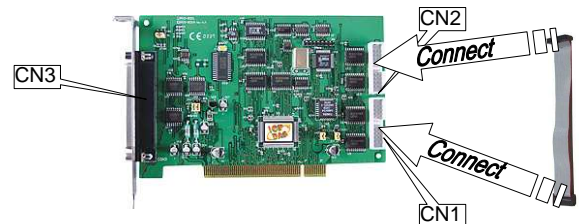
TTL Range

High(1)	2.0 ~ 5.0V (Voltage over 5.0V will damage the device)
None Define	2.0V~0.8V
Low(0)	Under 0.8V

5

Self-Test

I. Use CA-2002(Optional) to connect the CN1 with CN2



II. Run the DIO sample program.

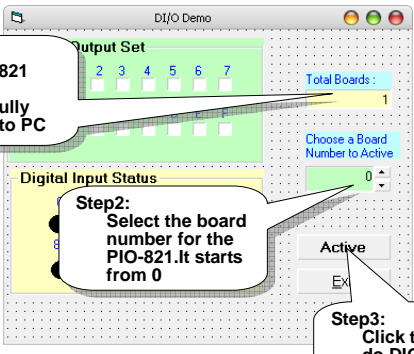
Get the zipped file from:

CD:\NAPDOS\PCI\PIO-821\dll\Demo

<http://ftp.icpdas.com/pub/cd/iocard/pci/napdos/pci/pio-821/dll/demo/>

III. Check number of the PIO-821, and test DIO function

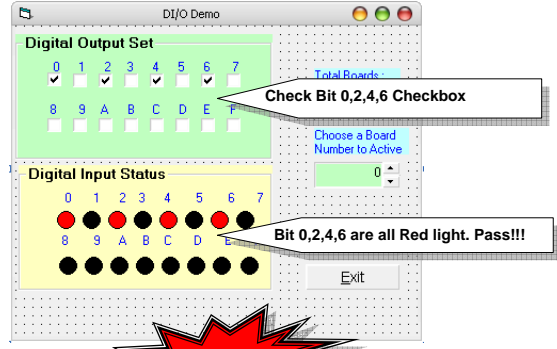
Step1:
One PIO-821
card had
successfully
installed to PC



Step2:
Select the board
number for the
PIO-821. It starts
from 0

Step3:
Click this button to
do DIO function
test

IV. Get DIO function test result



6 Additional Information

- ✓ PIO-821 Series Card product page:
http://www.icpdas.com/products/DAQ/pc_based/pio_821.htm
- ✓ CA-2002(Optional) page:
http://www.icpdas.com/products/Accessories/cable/cable_selection.htm
- ✓ Documents:
CD:\NAPDOS\PCI\PIO-821\manual
CD:\NAPDOS\PCI\Manual
<http://ftp.icpdas.com/pub/cd/iocard/pci/napdos/pci/pio-821/manual/>
- ✓ Software:
CD:\NAPDOS\PCI\PIO-821\
<http://www.icpdas.com/download/pci/pio-821/index.htm>

The ICP DAS Web Site

<http://www.icpdas.com>



- Technical support
- Supplies and ordering information
- Ways to enhance your device
- FAQ
- Application story

Contact Us

Service@icpdas.com

Copyright ©2008 by ICP DAS Co., Ltd. All right are reserved