



Quick Start Guide

Become familiar with your ZB-2570-T/2571-T/2570P-T/2571P-T in minutes!

Quick Start for the ZigBee Converter

1. Before configuring the ZigBee converter, adjust the switch to the **ZBSET** position then switch on the power (**Figure 1**). After configuration is complete, adjust the switch to the **RUN** position then switch on the power (**Figure 2**). Be sure to turn the power off before adjusting the switch.

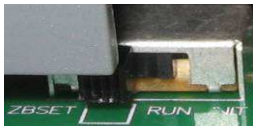


Figure 1

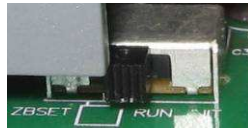
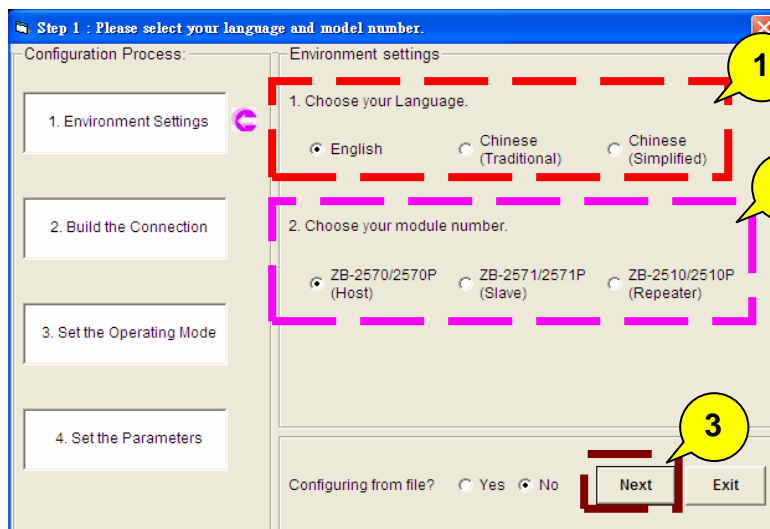


Figure 2

2. After installing the ZigBee_Configuration_Utility_Ver_4.1.2, the executable file can be found at: *Start\ProgramFiles\ICPDAS\C:\ICPDAS\ZigBee-257x_Configuration_Utility_Ver4.1.2\ZigBee_Configuration_Utility_Ver_4.1.2.exe*



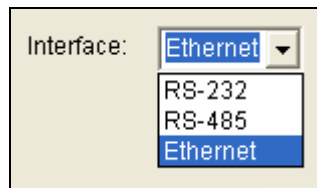
3. Connect the ZigBee converter using one of the hardware interfaces (RS-232, RS-485 or Ethernet; the default configuration interface is RS-232) and execute the utility.
4. When the following screen is displayed:
In the *Environment Settings* section:
 1. Choose the language.
 2. Choose the module (ZB-2570-T/2571-T/2570P-T/2571P-T).
 3. Click the **Next** button.



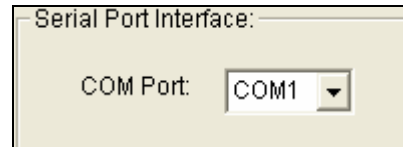
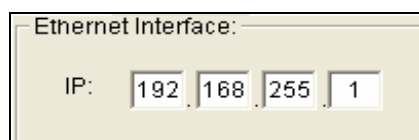
5. When the following screen is displayed:

In the *Build the Connection* section:

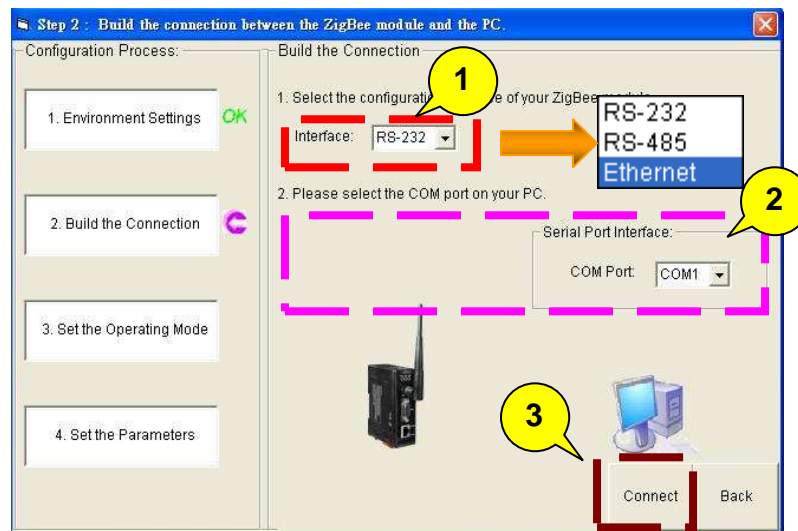
1. Select the configuration interface of your ZigBee converter module.



2. Enter the interface parameters (COM Port number or IP)



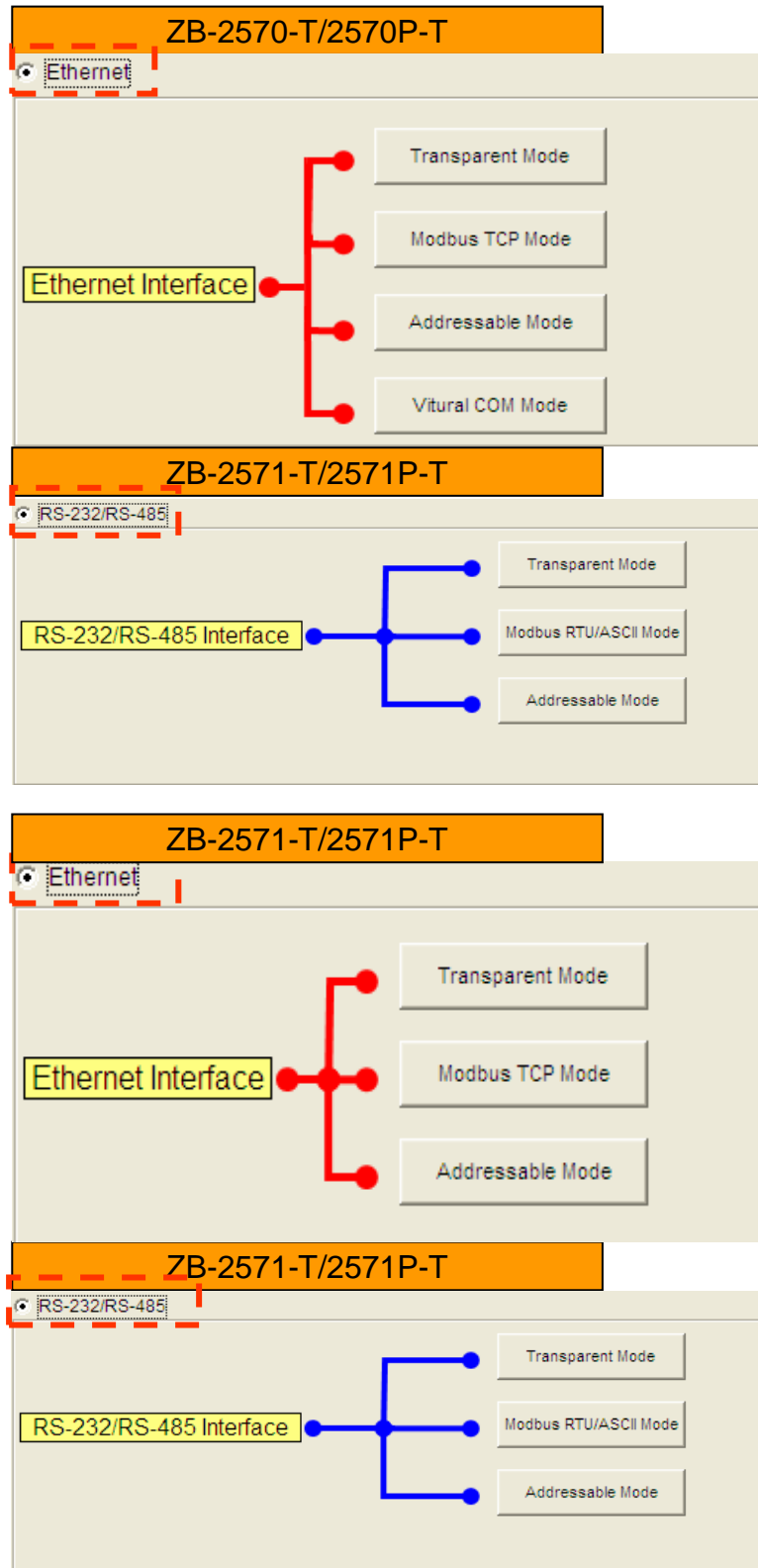
3. Click the **Connect** button.



6. When the following screen is displayed:

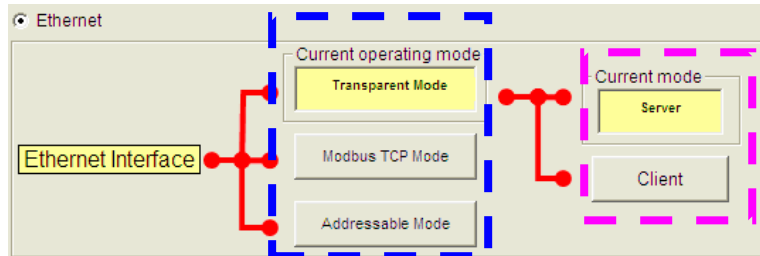
In the *Set the Operating Mode* section:

1. Select the interface that you plan to use for your ZigBee converter and devices.

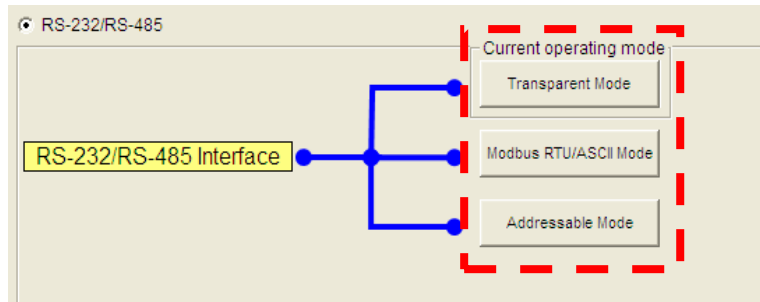


2. Select the operating mode that you plan to use for your ZigBee converter and devices.

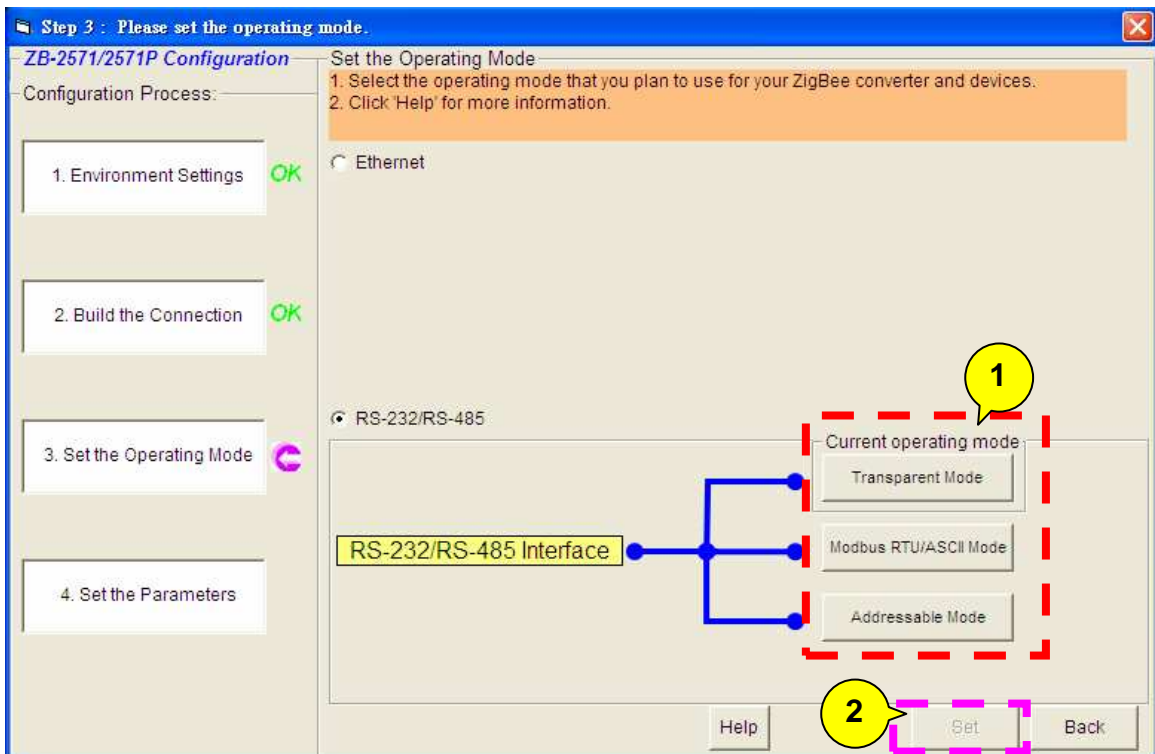
If you select the Ethernet of interface, that you must select two options. One is operation mode. The other is that ZB-2570-T/2570P-T or ZB-2571-T/2571P-T be a server or a client.



If you select interface which is RS-232/RS-485, that you only need to select the operation mode.



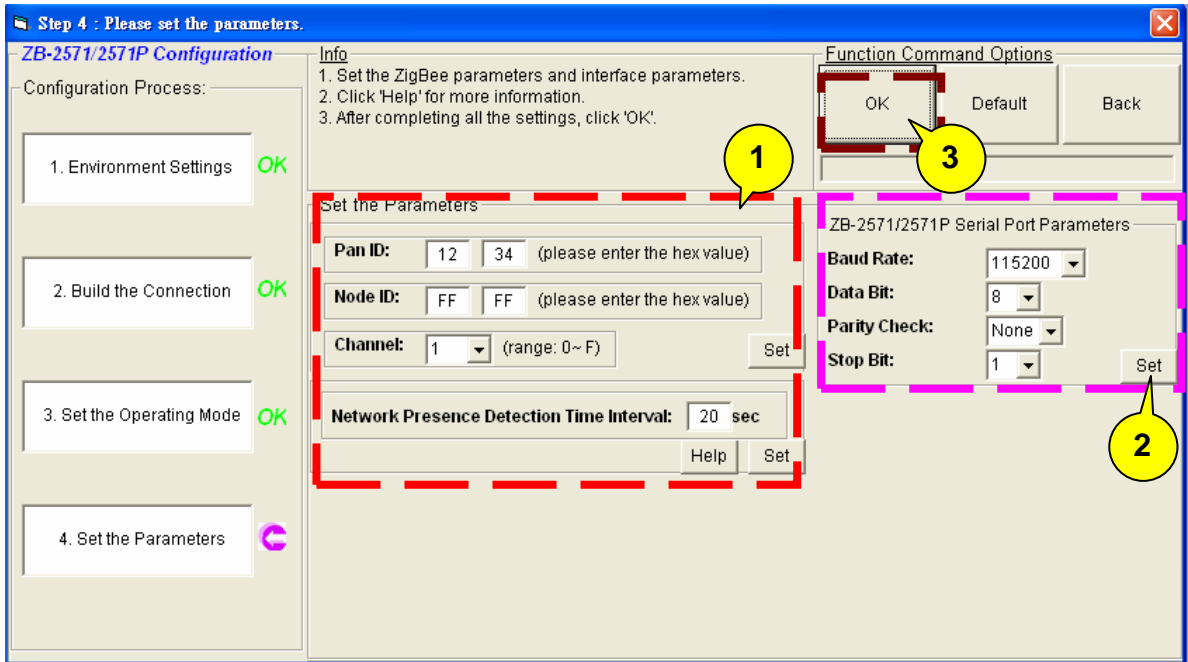
3. Click the **Set** button.



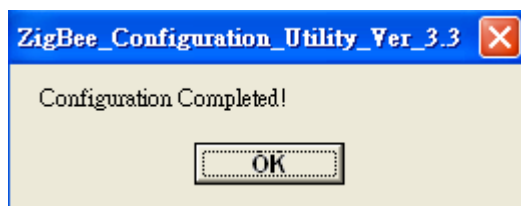
7. When the following screen is displayed:

In the *Set the Parameters* section:

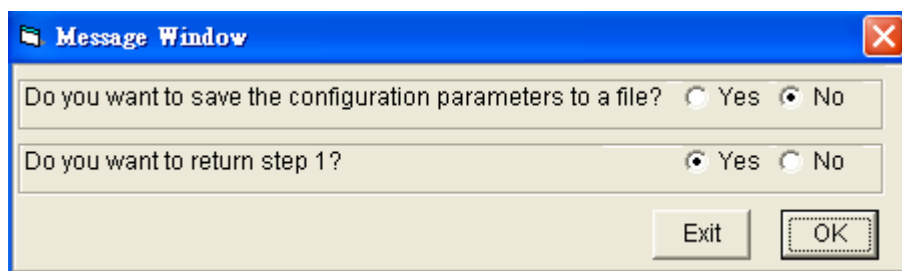
1. Set the ZigBee parameters. After entering the ZigBee parameter settings, click the **Set** button.
2. Set the interface parameters, after finishing the interface parameter settings, click the **Set** button.
3. Click the **OK** button.



When the following alert is displayed, it means that the configuration has been successful. Click the **OK** button to continue the configuration.

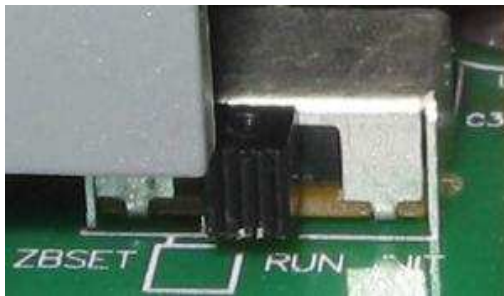


When the following alert is displayed, it means that configuration is finished. Click the **OK** button to exit the configuration.



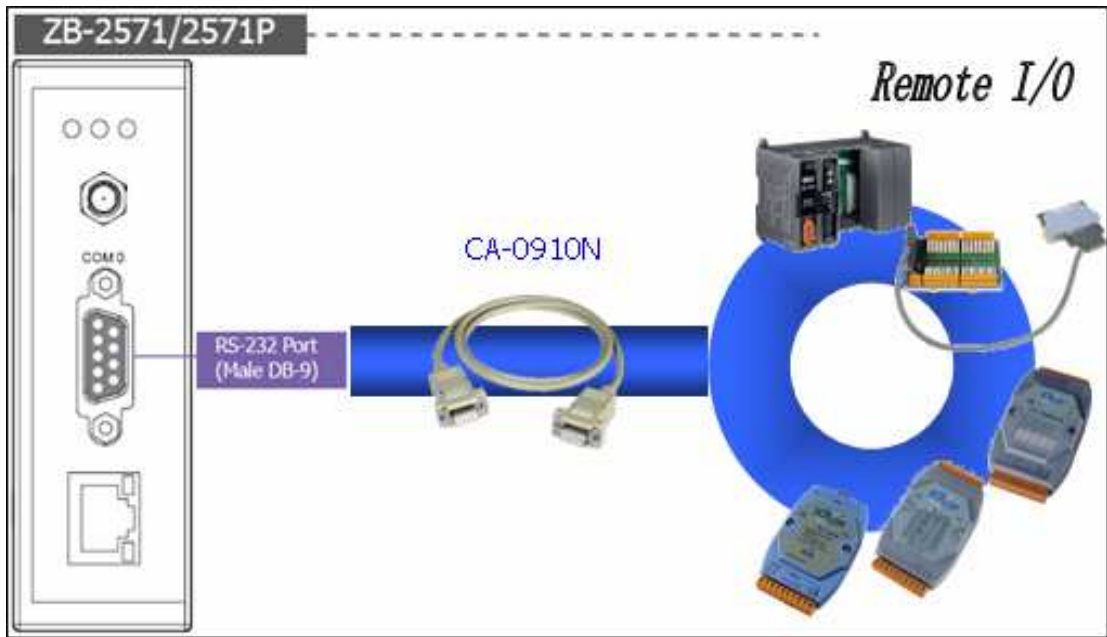
2. Installing the Hardware

1. Adjust the switch to the **RUN** position then power on the module.

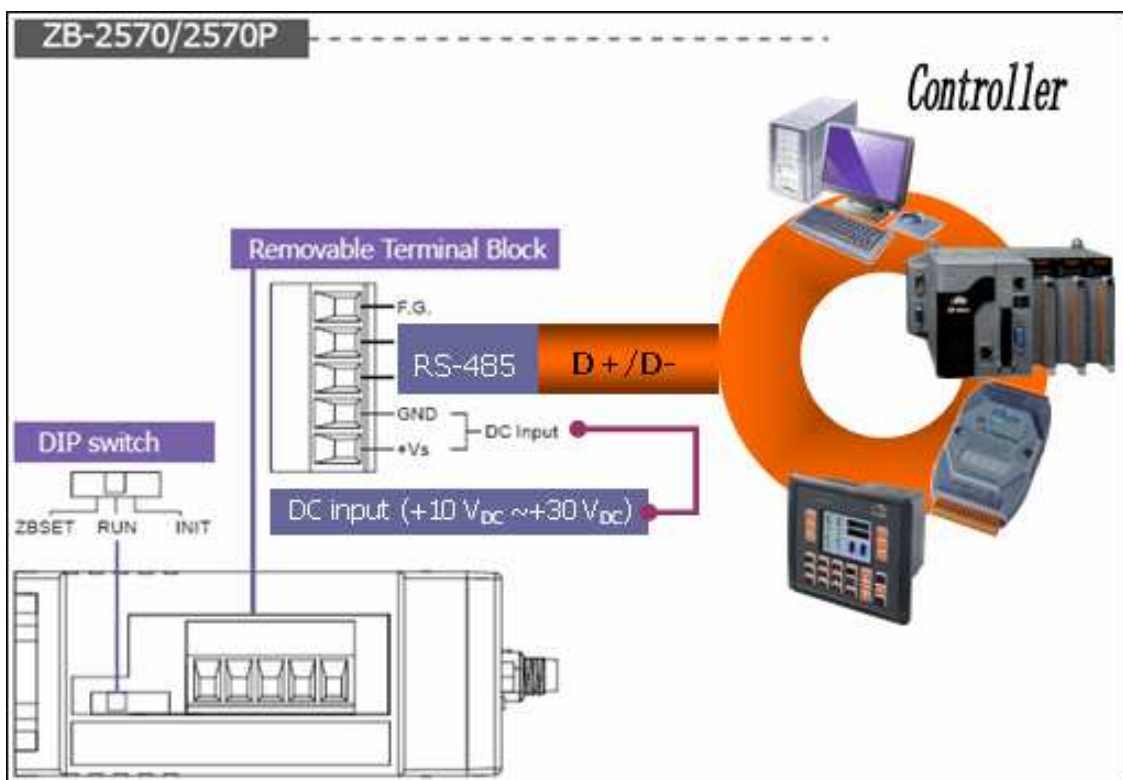


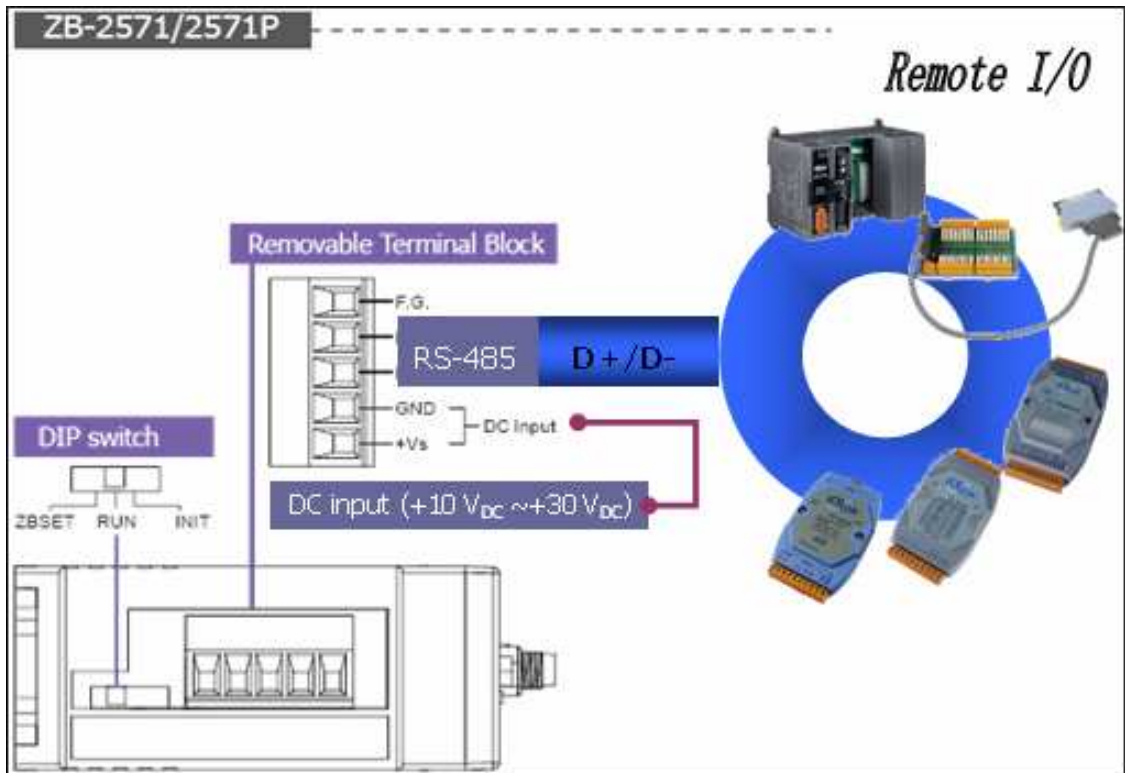
2. Serial Port - RS-232





3. Serial Port - RS-485





4. Ethernet – RJ-45

